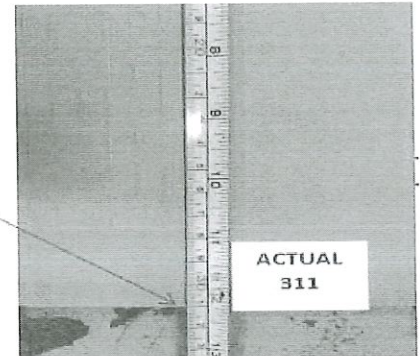
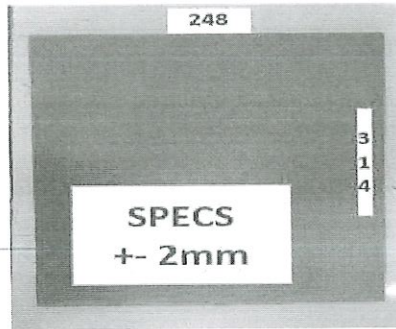
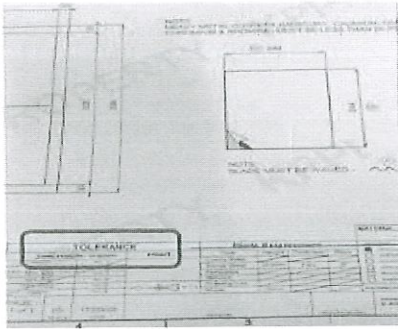


INVESTIGATION REPORT FOR OFF SPECS OF 514784600 PAD OUTER CARTON BOX

DIRECT CAUSE METHOD (PROCESS)

- W1: The drawing and the Job Order applied is a different set of measurement.
>The operator followed the measurement indicated in the job order though he doesn't yet check the actual drawing
- W2: The operator doesn't check the difference between the job order and the drawing
- W3: The proper standard procedure was not followed and the process is being bypassed



PRODUCTION ACTION PLAN

- > PLANNING
 - > USING ALTERNATIVE SIZE MPD
 - TRIAL MASS PRO (TARGET DATE: MAY 25, 2022)
- > MEASURING PAD OUTER CARTON BOX BEFORE USING IN MASS PRO AND AFTER OPERATION
- > CALL THE ATTENTION OF MPD PESONEL FOR USING ALTERNATIVE ITEM BEFORE USING IN PRODUCTION
- >Planning to inform MPD to apply internal 4M in using alternative materials.
- >List of items with 4m using alternative materials.
- > If can be put on JO or on production schedule. (remarks)

Prepared by:

PRODUCTION IE

Reviewed by:

Noemi Cepeda
PRODUCTION SUPERVISOR